

Solvency and Financial Condition Report 2021

Swiss Life (Liechtenstein) AG

List of Abbreviations	3
A Business and Performance.....	4
A.1 Business	4
A.2 Underwriting performance	5
A.4 Performance of other activities	6
B System of Governance.....	7
B.1 General information on the system of governance.....	7
B.2 Fit and proper requirements	12
B.3 Risk management system	12
B.4 Internal control system.....	19
B.5 Internal audit function.....	20
B.6 Actuarial function.....	21
B.7 Outsourcing	21
C Risk Profile.....	22
C.1 Underwriting risk	23
C.2 Market risk.....	24
C.3 Credit risk.....	24
C.4 Liquidity risk.....	25
C.5 Operational risk.....	25
C.6 Other material risks.....	25
C.7 Any other information.....	26
D Valuation for Solvency Purposes	27
D.1 Assets	27
D.2 Technical Provisions.....	28
D.3 Other Liabilities	31
D.4 Alternative methods for valuation.....	32
E Capital Management.....	33
E.1 Own Funds	33
E.2 Solvency Capital Requirement and Minimum Capital Requirement	34
E.3 Use of the duration-based equity risk sub-module in the calculation of the Solvency Capital Requirement.....	35
E.4 Differences between the standard formula and any internal model used	35
E.5 Impact of Corona Virus on Solvency Ratio	35
Annex	36
S.02.01.02 Balance sheet.....	37
S.05.01.02 Premiums, claims and expenses by line of business	39
S.05.02.01 Premiums, claims and expenses by country	40
S.12.01.02 Life and Health SLT Technical Provisions	41
S.23.01.01 Own funds	42
S.25.01.21 Solvency Capital Requirement – for undertakings on Standard Formula	43
S.28.01.01 Minimum Capital Requirement – Only life or only non-life insurance or reinsurance activity Linear formula component for life insurance and reinsurance obligations	43

List of Abbreviations

ALCO	Asset Liability Committee
ALM	Asset Liability Management
AMSB	Administrative, Management or Supervisory Body
BoD	Board of Directors
DTL	Deferred Tax Liability
ERM	Enterprise Risk Management
ExB	Executive Board
GRC	Group Risk Committee
ICS	Internal Control System
IFRS	International Financial Reporting Standards
IRC	Investment and Risk Committee
MCR	Minimum Capital Requirement
MTP	Mid-Term-Planning Process
OF	Own Funds
ORSA	Own Risk and Solvency Assessment
OSN	Overall Solvency Need
PVFP	Present Value Future Profits
SCR	Solvency Capital Requirement
SII	Solvency II
SLLIE	Swiss Life Liechtenstein
SST	Swiss Solvency Test

A Business and Performance

A.1 Business

This Solvency and Financial Condition Report (“SFCR” or the “Report”) is prepared in accordance with Directive 2009/138/EC of the European Parliament and of the Council of 25 November 2009 (“Solvency II”).

The report covers the financial year 2021 and is prepared for “Swiss Life (Liechtenstein) AG”, Industriestrasse 56, 9491 Ruggell, Liechtenstein (“SLLIE” or the “Company”). The Company is incorporated in Liechtenstein as a limited liability company (“Aktiengesellschaft”) since 2004 and is entirely owned by “Swiss Life Holding AG” through the holding structure shown in the annex.

The Company is supervised by the Financial Market Authority Liechtenstein based at Landstrasse 109, Postfach 279, 9490 Vaduz, Liechtenstein (“FMA”). The supervisory authority of SL Group is the Swiss Financial Market Supervisory Authority FINMA based at Laupenstrasse 27, 3003 Bern, Switzerland.

PricewaterhouseCoopers AG, Birchstrasse 160, 8050 Zurich, Switzerland (“PwC”), is serving as external auditor for SLLIE.

SLLIE is active in the following lines of business (“LoB”) for individual life insurance policies:

- Index linked and unit linked life insurance;
- Life insurance (excluding index linked and unit linked);
- Non-life insurance (health) licensed since October 2019. No contracts have been sold in 2021, market development is progressing.

These correspond to the following statutory lines of business as defined by law¹ in Liechtenstein:

- line of business 1: life insurance (“Lebensversicherung”);
- line of business 3: unit-linked life insurance (“Anteil- beziehungsweise fondsgebundene Lebensversicherung”);
- line of business 6: capitalisation operations (“Kapitalisationsgeschäfte”);
- line of business 2: non-life, health (“Krankheit”).

The traditional life insurance LoB is closed to new business and contains capital and annuity insurance policies with profit participation. The unit-linked portfolio of SLLIE contains products with and without guarantees. Capitalisation products consist of a closed portfolio of unit-linked products for which the Company bears no insurance risk.

Most business underwritten by SLLIE is included under the sub-brand Swiss Life Global Solutions of Swiss Life Group (“SL Group” or “the Group”).

¹ VersAG Annex 2

A.2 Underwriting performance

This section contains information on the Company's underwriting performance based on the figures shown in template S.05.01.02 and S.05.02.01 (see Appendix). The underwriting performance is based on statutory reporting.

Premiums written:

The gross written premium amount to CHF 79.3m (previous year CHF 59.1m) consisting of the following three main countries: CHF 32.9m from the business written in Italy, CHF 22.6m from Switzerland and CHF 19.1m from Austria. The premiums are still low following the impacts of the pandemic on the cross-border business.

Thereof CHF 4.2m (p.y. CHF 1.0m) are written in the LoB "Insurance with profit participation" and CHF 75.1m (p.y. CHF 58.3m) in the LoB "Index-linked and unit-linked insurance".

Claims incurred:

Gross claims incurred are CHF 1.2m accrued in the LoB "Insurance with profit participation" (p.y. CHF 0.6m) and CHF 446.1m (p.y. CHF 515.2m) in the LoB "Index-linked and unit-linked insurance". Most of the claims are due to full or partial surrenders.

Changes in technical provisions:

The change in technical provisions is CHF 2.6m (p.y. CHF -1.1m) recorded in the LoBs "Insurance with profit participation" and "Other life insurance" and CHF 303.8m (p.y. CHF 523.1m) in "Index-linked and unit-linked insurance".

Expenses incurred:

Expenses incurred in the LoB "Insurance with profit participation" are CHF 0.4m (p.y. CHF 0.5m) and CHF 15.9m (p.y. CHF 15.5m) in "Index-linked and unit-linked insurance".

A.3 Investment performance

In 2021, the Company recorded an investment result of CHF 0.1m (p.y. CHF 0.0m).

Investment Income

In CHF million		
	2021	2020
Income from participations	0.1	0.1
Income from other investments	0.2	0.2
Net realized gains on investments	0.2	0.0
Investment expenses	-0.3	-0.4
Investment result	0.1	0.0

Most of the investment income from other investments is related to fixed-income securities.

A.4 Performance of other activities

The next table shows the composition of the Company's statutory profit before tax.

In CHF million		
	2021	2020
Insurance result	6.7	6.7
Other income from insurance operations	13.5	12.1
Other expenses from insurance operations	-15.7	-13.7
Profit on ordinary operations	4.6	5.0
Extraordinary expenses	0.0	0.0
Profit before tax	4.6	5.0

The profit before tax for 2021 is CHF 4.6m (-9% compared to previous year). This decrease is driven by smaller premium volumes for the LoB 3.

Swiss Life (Liechtenstein) AG earned a solid profit for 2021 despite the on-going pandemic and its impact in particular on cross-border business and despite an on-going low interest environment. The statutory equity remained stable.

B System of Governance

B.1 General information on the system of governance

The Board of Directors (BoD) is the administrative, management and supervisory body (AMSB) of SLLIE and is in charge of the management of the business. It is vested with the broadest powers to perform all acts of administration and management in accordance with the corporate objects of SLLIE. The BoD is constituted according to applicable local law and comprises the following persons:

- CEO of Market Unit International as Chairman;
- CFO of Market Unit International;
- Head Corporate Mandates of Swiss Life Group;
- A representative of the Legal department of Swiss Life Group.

The BoD assumes all non-transferable and inalienable tasks and obligations as provided for by applicable law. In particular, the BoD monitors compliance with local laws and provide directives regarding risk control. Furthermore, the BoD ensures the establishment of adequate audit functions. The BoD role is to:

- Decide on strategic objectives;
- Prepare the agenda for the general meeting and implement its resolutions;
- Draw up the rules necessary for the orderly conduct of the business and instruct management accordingly;
- Supervise the persons entrusted with management and representation, having regard to the correct execution of the latter pursuant to the law, the articles and the regulations;
- Be regularly informed concerning the course and the conduct of the business.

The audit committee is installed to support the BoD in the supervision of the business. Its primary purpose is to provide oversight of financial reporting process, audit process, internal controls and compliance with laws and regulations.

Subject to the inalienable tasks and competencies according to applicable local law, the BoD delegates the responsibilities of running the business (including proposal, implementation of strategies and monitoring of plan execution, performance and compliance) to SLLIE's Business Area Management Team.

The Business Area Management Team is responsible towards the Executive Committee and the Management Committee of Market Unit International as well as to the BoD and local regulators for compliance with applicable laws. To effectively assume its responsibilities, the Executive Committee and the BoD have delegated all necessary powers to the Business Area Management Team.

Prior to any resolution of the Business Area Management Team, the following functions and or local functional governance bodies of SLLIE shall mandatorily be heard:

- Risk and Compliance Committee;
- Function heads.

The following table depicts the key functions of SLLIE:

Key Function	Key Function Holder
Risk management function	Head Finance & Risk
Compliance function	Head Compliance
Internal audit function	Chief Audit Executive
Actuarial function	Head Actuarial Services

These are described in more detail in the remaining of this chapter.

Remuneration policy

SLLIE's Compensation Policy is derived from the one of Swiss Life Group. The BoD is responsible for its establishment, and its main principles are summarized in a guideline communicated and made available to all employees on the Company Intranet.

The compensation policy underpins the performance culture required by the corporate strategy and forms part of the Human Resources policy. The aim is to retain qualified employees and recruit new, adequately skilled staff.

The compensation system is in line with the market environment and must be competitive.

The individual overall compensation takes into account the employee's professional skills, engagement, function, responsibility and personal performance and is independent of age, years of service or gender. It is made up of a basic salary, a variable bonus based on achievement of the annual objectives, which is generally paid in cash and possibly in shares as well as, in restricted cases, a deferred variable mid- to long-term compensation in the form of an equity compensation plan. The form and financing of fringe benefits and occupational pension solutions are market consistent.

In 2021, neither fee nor remuneration of any kind were paid to the members of the BoD.

System of Governance of Swiss Life Group

The AMBS of Swiss Life Group consists of the BoD and the Corporate Executive Board (ExB).

Swiss Life's system of governance comprises an adequate and transparent organisational structure, a clear assignment and separation of responsibilities as well as an effective system for the transmission of information. It comprises the necessary organisational structure, in particular the division of powers between the BoD and the ExB, an elaborated Directives System, defined key functions and clearly defined, documented decision making-processes.

The BoD is responsible for all matters that are not reserved for the consideration of the General Meeting of Shareholders (formally the supreme decision-making body of a public limited

company) under the terms of the respective law or by the company's Articles of Association. In line with its non-transferable duties prescribed by law, the BoD is responsible, in particular, for the ultimate direction of the entity, as well as the supervision of the Corporate ExB.

The ExB works out the long-term objectives and strategic orientation for the BoD and ensures a goal-oriented leadership. Swiss Life's business strategy is to offer:

- life and pensions solutions through Business Divisions / Business Areas in Switzerland, France, Germany, Liechtenstein, Luxembourg and Singapore;
- health and non-life insurance coverage in France;
- investment management solutions to institutional clients through Business Divisions in Switzerland, France and Germany;
- distribution of financial products in further markets such as UK, Austria and in Central and Eastern Europe countries.

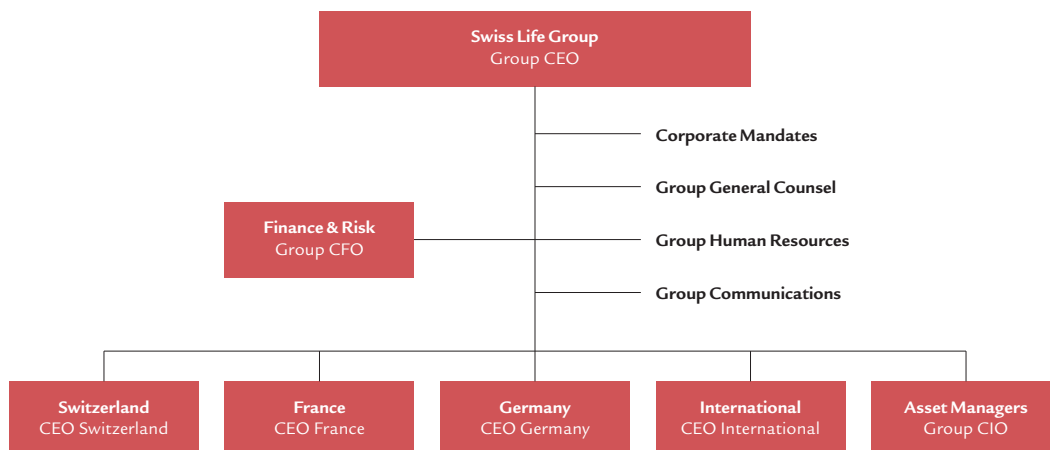
The Directives System – as outlined below – is maintained by the Group and ensures the goal-oriented implementation of the business strategy and adherence to Group standards on a Business Division level. For this purpose, the organization and division of tasks within the ExB generally reflects the key business areas and functions.

The key functions are implemented on Group and local level and serve as a means of communication for the business strategy and the relevant Directives, Guidelines and Instructions as well as the reporting of the necessary information for the ExB's decision. The key functions are:

- Risk Management Function;
- Compliance Function;
- Internal Audit Function;
- Actuarial Function.

The organization described above is reflected on a Business Division / Business Area level and is depicted in the Swiss Life Group's Organizational Chart (Figure 1 below).

Organizational chart Swiss Life Group



Board of Directors of Swiss Life Group

In accordance with the Articles of Association, the BoD has issued Organizational Regulations setting forth the internal organizational structure and the duties and competencies of the BoD, the BoDs' committees, the Chairman of the BoD and the Corporate ExB. The Organizational Regulations are reviewed regularly and adjusted where necessary.

The Chairman of the BoD coordinates the work of the Board and the committees, and ensures reporting from the Corporate ExB to the BoD. In urgent situations, the Chairman may also determine the necessary measures and take steps falling within the scope of the competencies of the Board until the BoD takes a decision. If a timely decision cannot be reached by the BoD, the Chairman is empowered to take a decision.

The BoD meets as often as business requires, usually at least six times a year. Meetings are generally called by the Chairman of the BoD. However, any member of the BoD may request that a meeting be called, as may the Corporate ExB. In addition to the members of the Board of Directors, the Group CEO also generally attends the meetings or parts of meetings in an advisory capacity, as do other members of the Corporate ExB when required.

The BoD is supported by four standing committees. These are the Chairman's and Corporate Governance Committee, the Nomination and Compensation Committee, the Investment and Risk Committee (IRC) and the Audit Committee. The BoD may establish other committees to be entrusted with special tasks.

Group Directives System

An integral part of Swiss Life's governance system is the Group Directives System. It regulates the functional management throughout SL Group and defines the content-related and organizational principles, standards and topics.

The Group Directives System is arranged into Group topics and contains Group Directives, Group Guidelines and Group Instructions.

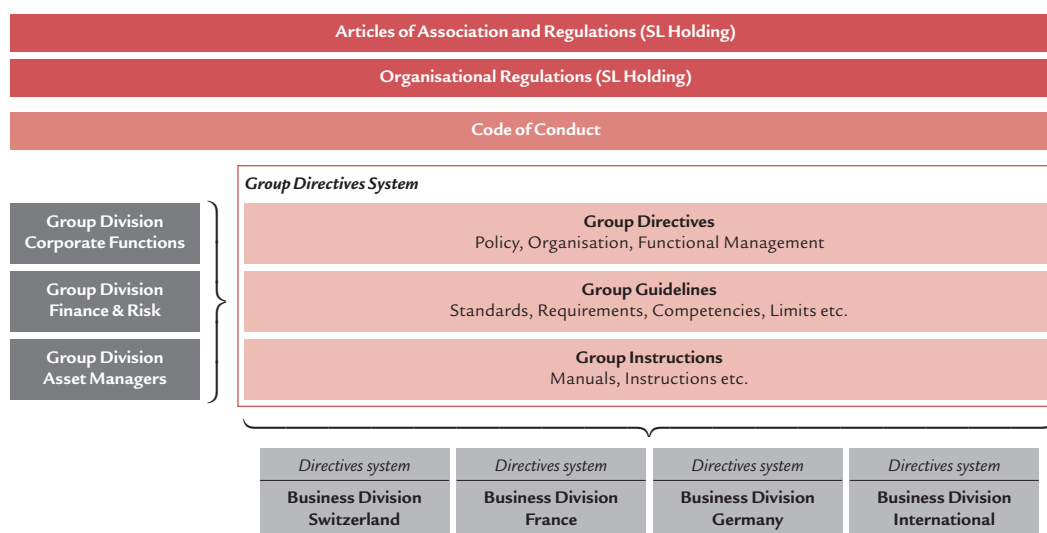
- Group Directives set out the content-related principles (policy) and requirements as well as organizational and functional management aspects (incl. authorities' framework);
- Group Guidelines follow on from the Group Directive and set out more detailed content-based requirements and topics, as well as the minimum standards;
- Group Instructions are based on the Group Directives and Group Guidelines and set out concrete instructions in the form of manuals, etc.

Following a standardized consultation process, involving management, functional stakeholders and responsible persons within the Business Divisions, the Group Directives and Group Guidelines are put into effect by the Group Executive Board.

The Business Divisions operate their own directives system and implement the content and objectives of the Group Directives and Group Guidelines, taking into account local laws and regulations as well as local business specifications.

Figure 2 depicts the hierarchy of regulations and the Directives system within Swiss Life Group:

Swiss Life regulations and directive system



SLIE is included in the Business Division International, from a management and reporting perspective, which groups the insurance entities in Liechtenstein, Luxembourg and Singapore as well as the distribution channels in the United Kingdom and Eastern Europe.

The system of governance is reviewed internally on a regular basis. It is the responsibility of the Corporate Internal Audit function to plan and perform the audit. Specifically, Swiss Life's Audit Charter defines that Corporate Internal Audit has to ensure the maintenance of an adequate corporate governance. For this purpose the appropriate processes have been defined based on Swiss Life's Audit Charter².

The processes include a planning phase where the relevant topics are identified, how the audit has to be performed and documented as well as the manner in which the results have to be reported.

The organisational structures are also mirrored locally by SLLIE.

² SLG 19 Audit Charter, p. 2

B.2 Fit and proper requirements

Swiss Life places great importance on ensuring that all persons who fulfil key functions are fit and proper for their position. For this purpose, each Business Division follows a Human Resources (HR) Cycle based on Swiss Life Group HR framework.

Therefore, the HR cycle contains the following processes which are described in the respective internal policies and ensure the AMSB as well as employees' fitness and propriety:

- HR planning;
- Hiring;
- Performance measurement;
- Salary review, bonus and nomination;
- Human capital management (including development measures);
- Quality assurance (including personnel induced opportunities and risks assessment);
- Management/Leadership tasks.

In addition to the above processes, Swiss Life established a Code of Conduct that outlines individual responsibilities, behaviour principles for all employees and additional responsibilities for members of management. Its purpose is to offer guidance for the interactions with each other and with all persons outside of Swiss Life with whom come into contact and serves as the basis for fulfilling the proper requirement. All Employees of Swiss Life Group and its entities must commit to the mission and the values of Swiss Life and comply with the values, principles rules and guidelines for the business activities as outlined in the Code of Conduct including adherence to local laws and regulations.

Swiss Life's Compliance function plays another important role in ensuring the propriety of employees. Not only is the function responsible that employees are educated about the Code of Conduct but also that relevant processes are in place in order to foster compliant behaviour, detect non-compliant behaviour and track and report Swiss Life's employees degree of compliance to standards and local laws and regulations.

SLLE ensures the fitness and propriety of its AMSB and employees in close alignment with SL Group. Group HR and Divisional HR organisations act in cooperation and involve where appropriate, their line management. Heads Divisional HR represent not only their Divisional/Area organisation's interests but also the Group interests in the Group HR Board.

B.3 Risk management system

SLLE pursues an integrated, value-oriented risk management approach, involving both quantitative and qualitative elements. The goal is to protect customers' funds and ensure the best possible investment of risk capital, while complying with the regulatory requirements and taking into account the challenging economic conditions.

Risk management is a key component of Swiss Life's management process. The respective committees of the Corporate ExB and the BoD monitor and take decisions in the area of risk management; these are then incorporated into the annual planning process of Swiss Life. On the one hand, they comprise qualitative assessments relating to the strategy, to operational risks and to

the internal control system (ICS). On the other hand, quantitative elements, such as risk budgeting and investment strategy, are included in asset and liability management. Based on risk capacity and risk appetite and taking account of regulatory provisions, limits are set in Swiss Life for the financial risks incurred, according to which the investment targets are set.

Risk management tasks are performed at all levels within Swiss Life Group by corresponding bodies, such as the IRC at the level of the BoD of the Swiss Life Group and the Group Risk Committee (GRC) at the level of the Corporate ExB.

Analogously, the Company performs these tasks on a local level.

Risk strategy

Swiss Life's risk strategy supports the business strategy and enables the company to grow in its businesses and markets in a sustainable and profitable way.

Swiss Life seeks to take on those risks inherent to the insurance and pension business, that are well understood and for which the expected return compensates the shareholder adequately, i.e. to assume those risks with which the associated cost of capital can be earned.

Other risks inherent to the business that cannot be avoided (e.g. operational risks) must be actively monitored and mitigated applying various techniques.

As a matter of principle, Swiss Life sets its risk appetite, i.e. how much risk it is willing to assume, in consideration of its risk capacity. The risk appetite shall not exceed the risk capacity, i.e. the amount of risk that can be taken in order to run the business in a sustainable way.

Risk management objectives

Key components of risk management are the systematic identification, analysis, assessment, monitoring and management of risks as well as their reporting.

Risk strategy techniques

For the management of risks, the following techniques are applied at Swiss Life:

- Risk avoidance is the systematic avoidance of undesired risks (those expected not to compensate the shareholder adequately). Since some of them are connected with desired risks, the below mentioned techniques are applied subsequently;
- Risk mitigation is the systematic reduction of existing risks. This can be achieved, e.g. by hedging undesired exposures through purchase of financial instruments or by the implementation of controls;
- Risk diversification reduces risks by accepting risks, which are similar but not fully correlated. The overall risk is then lower than the sum of the individual risks;
- Risks are limited by setting thresholds so that the potential loss is limited, e.g. by limiting the equity exposure or by limiting the size of insurance coverage granted;
- Risk transformation is changing the character of an existing risk, e.g. through the purchase of re-insurance cover;
- Risk acceptance is the conscious decision to accept a risk, if necessary after application of the above risk techniques.

The application of these techniques varies by risk type and combinations of them may be required in addressing specific risks.

Risk governance – Guiding principles

Responsibility for managing risks is an integral element of all roles and activities throughout Swiss Life. Key principles are:

- *Ownership and accountability*: roles and responsibilities and minimum control standards for risk takers and risk controllers are clearly defined and communicated;
- *Compliance with regulatory requirements*: external legal and regulatory requirements must be met at all times and in an efficient manner;
- Coordination and reliance among different assurance functions, e.g. ongoing exchange between Risk, Compliance and Audit;
- *Independence*: clear separation between risk taking and risk controlling/assurance functions while maintaining strong links to the business.

Risk governance – lines of defence

Swiss Life's organizational structure can be viewed as three «lines of defence» ensuring independent risk monitoring and control activities.

The first line of defence is the responsibility of the business (risk takers) and includes (but is not limited to):

- Senior management;
- Process owner;
- Control owner.

The second line of defence concerns those responsible for risk oversight and risk guidance (risk controller i.e. risk measurement / monitoring) including the corresponding reporting:

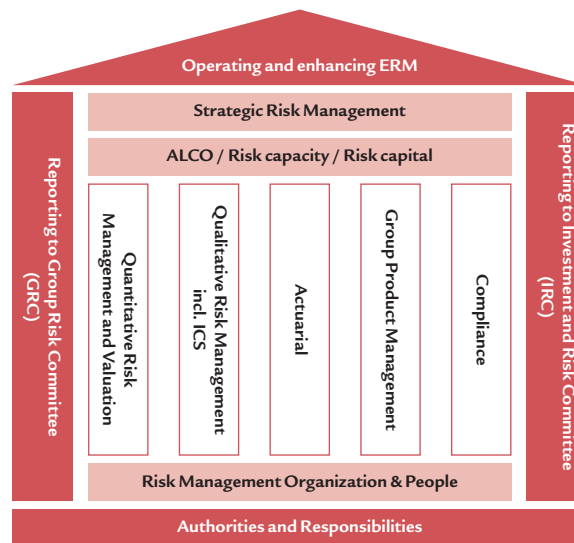
- Risk management functions;
- Compliance;
- Other control functions.

The third line of defence is independent assurance of the effectiveness and efficiency of risk management processes (among others). This assurance is the responsibility of:

- Internal audit;
- External audit.

Risk management framework of Swiss Life Group

The risk management framework as depicted in the table below serves to operate and enhance the Group's enterprise risk management (ERM) and to achieve the stated goals. The authorities and responsibilities are defined in the Articles of Association and Regulations, in the Organisational Regulations of SL Holding and in the directives systems. They provide the foundation to operate the Group's ERM. The boards and committees as well as the organization were described previously.



Quantitative risk management and valuation

The emphasis in the framework for the quantitative risks is put on the insurance businesses and relies on economic principles.

If possible and meaningful, risks are measured and quantified (quantitative risk management). Otherwise a qualitative assessment for the identified risks has to take place (covered by the qualitative risk management directive).

Risks should be quantified as far as possible, based on generally accepted methods. Risk valuation models are not static and have to be continuously improved.

Different forms of financial terms may occur:

- Preferably risk is measured according to probabilities and the corresponding extent of negative drawdowns;
- Possibly risk is measured as the impact of specific scenarios with an assigned probability that is subject to experience and judgement.

The methods to assess the individual quantitative risks are outlined in the guidelines on quantitative risk management:

- *Market risk*: Interest rate risk (covering also Asset and Liability Management (ALM) risk and interest rate spread risk), equity risk, currency risk, real estate and alternative investment risk;

- *Credit risk*: Migration risk (covering also default risk), concentration risk (with respect to counterparty, industry and geography);
- *Insurance risk*: Mortality, longevity, disability, recovery, surrender, costs, capital option;
- *Liquidity risk* (especially funding risk) is covered within the ALM process by stress scenarios. Liquidity is continuously monitored by a liquidity plan and liquidity reporting. In addition, liquidity stress test are conducted on a quarterly basis.

The aggregation of market, credit and insurance risks to the economic risk capital takes the effect of extreme scenarios (financial as well as biometric and combined ones) as well as diversification effects into account.

The liabilities and the corresponding assets of the insurance business are projected based on economic scenarios over a long-time horizon. In this projection, management rules, such as rules on profit sharing between policyholder and shareholder are applied. The expected shareholder value under these scenarios contributes to the risk capacity as do other forms of capital such as hybrid debt. By stressing the economic scenarios or parameters applied in the projection, sensitivities to financial market changes or to insurance parameters are derived.

The unit-linked contracts on policyholders' account are considered on a net cash flow basis and are subject to insurance, market and credit risk.

The quantification for these is done in terms of economic risk capital that reflects the potential loss in adverse situations over a one-year period, based on the risk drivers identified for each business. This capital needed has to be covered by risk bearing capital, and the ratio corresponds to the coverage or the economic solvency.

Qualitative risk management

The qualitative risk management covers strategic risks, emerging risks and operational risks. In these areas, the risks are difficult to quantify or a general quantification approach is not established yet in the insurance sector. Where appropriate, the identified risks are addressed by the ICS.

Strategic Risk

Swiss Life uses analytical methods to ensure that strategic risks are dealt with adequately in what continues to be a very challenging economic environment. In its strategic risk management process, Swiss Life incorporates all the information on risks and the risk/return characteristics in its strategic decisions. A thorough understanding of the interplay of individual risks is essential to take into account the factors influencing risks during strategy development so that these factors can be steered appropriately.

Emerging Risk

With emerging risk management, newly developing or changing risks and their influence on the existing risk environment are monitored and analysed. Emerging risk is a dedicated risk category, which has strong interaction with other risk types such as insurance risk such as mortality, longevity and disability. Often, consequences of emerging risks are influencing triggers of other risk types in both ways, positive or negative. From a risk management perspective, those conse-

quences, which have an impact on the business have to be analysed, understood and monitored over time. The result of the analysis is considered in the strategic risk management process.

Operational Risk

Operational risk is an inevitable consequence of being in business. The aim is not to eliminate every source of operational risk but to provide a framework that supports the identification and assessment of all material operational risks and potential concentrations in order to achieve an appropriate balance between risk and return. Sound operational risk management (which includes information security and IT risk management as well as business continuity management) and an effective ICS are an integral part of creating sustainable value for shareholders.

The Swiss Life's ICS framework is described in chapter B.4.

Risk steering and Swiss Life's comprehensive system of limits

Swiss Life has set up a comprehensive system of limits to capture and reflect the nature of the underlying risks.

Quantitative Risk

- The risk appetite is set on BoD level by the IRC and is expressed as Swiss Solvency Test (SST) ratio limit for Swiss Life Group and for Swiss Life AG;
- This risk appetite is cascaded down through unit specific SST ratio limits (which ensure in aggregate adherence to the SST ratio limit for Swiss Life AG) set by the GRC and specific risk capital and exposure limits for units set by the Asset Liability Committee (ALCO);
- For credit risk, rating-dependent exposure limits avoid concentration risk of counterparties;
- Monitoring is performed through two key reports on both unit and consolidated level. As part of ALCO process, additional local constraints (e.g. SII, tied asset coverage, etc.) are monitored and managed locally;
- Within the asset managers division, additional limits (including monitoring) are established to operationalize ALCO limits and to therefore ensure adherence to the ALCO and – ultimately – SST limits.

Qualitative Risk

- Strategic and operational risks have quantitative risk tolerance levels and thresholds.

Actuarial

- Insurance risk is managed through an underwriting case process with limits and thresholds.

Product Management

- Profitability hurdle rates on unit and product level through pricing policy;
- Local product developments exceeding certain thresholds are subject to a Group approval process.

Risk Management Function of SLLIE

The Risk Management Function is not isolated but an integral part of the overall management activities of SLLIE as it is within Swiss Life Group.

It should not only analyse the developments of the past but should also provide the senior management with the analysis of future risk aspects.

SLLE's Risk Management Function is headed by the local Head Finance & Risk.

The responsibilities of the local Head Finance & Risk in the context of quantitative risk management are:

- ensuring the establishment of an appropriate risk management in the relevant unit;
- processing and solving risk management issues within the relevant unit;
- representing the relevant unit in risk management issues within and outside the company in consultation with Group Risk;
- reporting according to the instructions of the Group Risk which are outlined in the guideline on risk reporting;
- implementing the respective requirements of the Group directives and guidelines into their directives system by taking into consideration local law, local specifications and business activities;
- ensuring that the necessary human resources are available in terms of numbers, skills, knowledge, and experience.

The final functional management is in the responsibility of the Group Chief Risk Officer ("CRO"). The risk functions are established at Group and SL Business Division level with the respective responsibilities. The Group and local risk functions support the risk management bodies (GRC and IRC) and ensure the adherence to and the compliance with the respective Group and local directives.

Own Risk and Solvency Assessment (ORSA)

Pursuant to Art. 45 of the Solvency II Directive, SLLE performs the Own Risk and Solvency Assessment (ORSA) which is embedded Company's decision-making and risk management process.

The ORSA consists of a forward-looking assessment of the Company's risk and solvency position over the planning period, comprising:

- An assessment of the continuous compliance with the SCR and Technical Provisions;
- An assessment of the significance of the deviations between the Company's own risk profile and the assumptions underlying the Solvency II Standard Formula;
- An assessment of the Overall Solvency Needs (OSN) taking into account the Company's risk profile and risk tolerance limits.

The quantitative assessment of the OSN is performed by taking the results of scenario- and stress-tests into account and is supplemented by a qualitative description of the Company's risk profile. The OSN assessment covers all material risks the Company is exposed to and is performed considering a number of scenarios. Those are defined by the AMSB consistently with the Company's risk profile taking into account a range of developments relevant for the business such as changes in the economic environment, the resulting evolution of the risk profile and projected management decisions in accordance with the business strategy.

The ORSA is an integral part of the risk management of SLLIE and is embedded in the decision-making process of the Company. The results of the ORSA are an input to the strategic mid-term planning (MTP) process, which sets strategic direction of the Company over a three year horizon.

The ORSA is performed at least on an annual basis in accordance with the schedule of the MTP process. In addition, a non-regular ORSA might be required in case of specific internal or external events (e.g. the start-up of a new line of business, portfolio transfers or major changes in the asset structure or financial market conditions). The results of the ORSA are included in the ORSA report.

B.4 Internal control system

Swiss Life Group's ICS consists of the entirety of procedures, methods and measures prescribed by the BoD and the Corporate ExB to ensure the orderly conduct of business. The focus is on the reliability of financial reporting, the effectiveness of business processes and compliance with laws and regulations issued to protect the company's assets.

Swiss Life Group established an effective ICS as part of the overall qualitative risk management to mitigate financial reporting risks, compliance risks and operational risks. Swiss Life's ICS essentially comprises the following parts as outlined in the ICS Group Guideline: the ICS framework, the internal control management process and the associated roles and responsibilities.

The ICS framework contains the description and documentation of:

- process-level control measures (measures implemented in business process to mitigate financial reporting, operations and compliance risk);
- entity-level control measures (measures implemented to control compliance with external and internal laws, regulations and standards);
- the IT control framework (framework to ensure completeness, accuracy and integrity of business transactions which are performed or supported by applications) and
- minimum requirements for end-user computing tools.

SLLIE implemented and operates the ICS locally within the standards of SL Group. The ICS comprises the ICS framework, the internal control management process and the associated roles and responsibilities.

Description of the Compliance Function

The objective of the Compliance Function in SLLIE is to ensure:

- a conduct that ensures compliance with legal and regulatory requirements and other external or internal regulations at all times;
- the identification and avoidance of compliance risks, and thus of respective consequences, above all potential impacts on Swiss Life's reputation;
- a prudent management at all times

by defining the necessary compliance standards and respective processes for all areas of Swiss Life Group, supporting both employees and management in the implementation and enforcement thereof. Moreover, the role of local compliance is prescribed to encompass the local regulatory requirements of Solvency II.

Group compliance standards have been developed to ensure the implementation and enforcement of material compliance topics, in accordance with the locally applicable legal and regulatory requirements³. The compliance function ensures at every functional level adherence to the Group directives system described in chapter B.1.

SLLE defines the reporting line between the local Head of Compliance and the local Management while taking into consideration the independence of the function as second line of defense. In addition, the local Head of Compliance has a functional reporting line to the Group Head of Compliance.

SLLE's Compliance Function is owned by the local Head of Compliance. This function is geared toward 5 different pillars for which the department is responsible for performance and reporting to the local CEO and the divisional Head of Compliance:

- Compliance with the regulation against money laundering and the terrorism financing;
- Qualitative Risk management (including the management of the ICS);
- Compliance Audits & Controls;
- Regulatory Compliance including tax reporting activities (FATCA/CRS);
- Special Investments in the context of the Private Wealth business (private equity investments).

B.5 Internal audit function

The Internal Audit Function is performed by the Corporate Internal Audit of the Swiss Life Group in conjunction with the Audit Committee of the Group. By doing so, the Company ensures that:

- Appropriate resources are allocated to the task;
- Recognised internal audit standards are applied and fulfil the requirements of the law such as audit plan definition, adequate reporting of audit findings and recommendations;
- A follow-up process is in place through effective tracking tools;
- Decisions of the BoD of the Company comply with previous recommendations.

³ SLG 8.2 Compliance Standards

B.6 Actuarial function

The local Head of Actuarial Services ensures at all time that the actuarial function is carried out by persons who have an adequate knowledge and understanding of the written insurance business, stochastic nature of insurance, the risk inherent in assets and liabilities, as well as an understanding of the use of statistical models commensurate with the sophistication of the methodologies and models applied by Swiss Life Group. The deepness of the knowledge required depends on the organisational level they belong to.

The local Head of Actuarial Services represents the actuarial function under Solvency II.

The Actuarial Function at Swiss Life is defined in the following organisational levels:

- Group Actuarial Services;
- Appointed Actuary;
- Actuarial Board;
- Actuarial Organisation and local Actuarial Services.

Actuarial Board

The Actuarial Board consists of the Group Chief Actuary (Chairman), the local Chief Actuaries and the Appointed Actuaries. The Board approves Actuarial Directives, Guidelines and Instructions from a functional point of view according to the Group Directives system.

Local Chief Actuary

The local Chief Actuary is responsible for performing all actuarial functions of the Business Division without any statutory duties in contrast to the Appointed Actuary.

Within the Company, both roles, appointed actuary and chief actuary are held by two different persons.

The local Chief Actuary has to ensure the appropriateness of the Divisional Actuarial Function Guidelines and the alignment with all local specific legal and regulatory requirements. As representing the Actuarial Function, the local Chief Actuary is responsible for the assessment of the technical provisions according to Solvency II principles, the assessment of reinsurance and underwriting policy regarding their appropriateness. An adequate segregation of responsibilities established within the organizational structure ensures that the person performing actuarial tasks is not simultaneously responsible for the execution and for the providing an opinion on the adequacy of the executed item.

B.7 Outsourcing

A Group Outsourcing Guideline defines outsourcing requirements throughout the Swiss Life Group. It regulates the outsourcing to external service providers and describes the outsourcing process at Swiss Life and has been implemented accordingly by SLLIE.

Prior to the outsourcing of critical or important functions or activities as well as of any subsequent material developments with respect to those functions or activities, the outsourcing SL entity has to notify Group Qualitative Risk Management.

In case of outsourcing of critical or important functions such as risk management, compliance, internal audit or actuarial, the Company has to ensure the fitness and propriety of all persons working on that function. The outsourcing has to be approved by the Group Executive Committee or the Divisional Executive Committee.

The Company maintains an inventory about all outsourcings (internal and external) which contains information about the classification (“critical and / or important activity or function”), the performance evaluation and the impact on Swiss Life, in case the service is not delivered as agreed (risk assessment).

The Company has some critical outsourcings (IT infrastructure management, outsourcing of HR payroll administration, Risk Management function, Actuarial function under SII) which have already the appropriate formal agreements or where the approval process is on-going with the FMA. All outsourcings are monitored closely.

C Risk Profile

Risk is defined as the potential danger of an actual result deviating adversely from the expected result. If meaningful, material risks must be measured and quantified. If a risk cannot be quantified, a qualitative assessment needs to be done.

When measured, the risks are assessed by their contribution to the SCR applying the standard formula from the Directive 2009/138/EC. In other cases, when this is not possible, the risks are identified, assessed and managed through the Company’s qualitative risk management framework including the internal control system.

The detailed results from the Solvency II standard formula are given in section E.2. As a summary, the main risks for the Company are the market risk, more specifically currency and equity risk, the life underwriting risk due to lapse risk as well as credit risk.

The Company invests its assets according to the ‘prudent person principle’ as presented in Article 132 of Directive 2009/138/EC:

The general assets (i.e. not covering unit-linked contracts) are invested in regulated financial markets and no use of derivatives was made over 2021.

The unit-linked investments follow the investment strategy provided in the contract conditions chosen by the policyholder. Moreover, the valuation processes in place aim at limiting any discrepancy in value between the technical provisions and the covering assets.

C.1 Underwriting risk

Insurance risk refers to the risk of a loss based on deviation between the expected costs for claims and benefits and the actual costs as a result of accident, error or change of circumstances.

Insurance contracts are contracts under which one party (the insurer) agrees to compensate the other party (the policyholder) if a specified uncertain future event affects the policyholder. The Group's insurance entities neither generally accept nor generally deny insurance coverage to applicants, but ensure that all the insurance risks are identified and thoroughly assessed, and that the insurance premiums accurately reflect the risk taken. The amount and type of risk taken must be in line with the Group's risk policy and strategy, and must also meet the profitability targets.

Embedded options

The ability of a policyholder to pay reduced or no future premiums under a contract, to terminate the contract completely or to exercise a guaranteed annuity option means that the insurer's liability is also subject to policyholder behaviour to a certain extent. On the assumption that a certain group of policyholders will make decisions rationally, overall insurance risk can be aggravated by such behaviour.

Underwriting strategy

Underwriting is the process of selecting and classifying insurable risks. The underwriting strategy attempts to ensure that the risks underwritten are profitable and well diversified in terms of type of risk and level of insured benefits. Life insurance underwriting is performed to ensure that the premiums and the general conditions of the insurance policies are adequate for the risks to be insured.

Measures to assess the material risks

Insurance Risk is regularly measured based on the Solvency II Standard Formula and its assessment is part of the ORSA process of the Company.

Material risk exposure (incl. material changes)

Due to the nature of its portfolio and unit-linked products, SLLIE is exposed to underwriting risk mainly by lapse risk linked to the policyholder behaviour.

Expense risk exists in all insurance companies and arises when the loadings are not sufficient to cover the administration expense basis.

Biometric risks such as mortality have a limited risk contribution due to the reinsurance program in place and the nature of the products with only legally required death coverage.

C.2 Market risk

Market risk refers to the risk of a loss due to changes in the financial position, which, directly or indirectly, arise from fluctuations in the level and/or volatility of market prices for assets, liabilities or financial instruments. Market risk includes the risk of currency rate changes.

In the context of SLLIE, market risk is mainly due to a potential decrease in future profits due to adverse market developments. This is a consequence of the fact that market risks are borne by policyholders for the majority of the Company's portfolio.

Measures to assess the material risks

Market Risk is regularly measured based on the Solvency II Standard Formula and its assessment is part of the ORSA process of the Company.

Material risk exposure (incl. material changes)

SLLIE's Market Risk is mainly driven by currency risk resulting from the fact that the currencies of the insurance contracts are mostly different from the reporting currency CHF.

Furthermore, Market Risk is explained by equity and spread risk which are the second largest ones due to the unit-linked portfolios invested in equity, bonds, equity and fixed income funds.

Interest rate risk is not material as the durations of the liabilities and their covering assets are matched.

C.3 Credit risk

SLLIE is exposed to Credit Risk, which is the risk due to the uncertainty in a counterparty's ability to meet its contractual obligations. Key areas are:

- Reinsurance share of insurance liabilities;
- Amounts due from reinsurers in respect of claims already paid.

Measures to assess the material risks

Credit risk is regularly measured based on the Solvency II Standard Formula and its assessment is part of the ORSA process of the Company.

Material risk exposure (incl. material changes)

As of year-end 2021, credit risk arises on the reinsurance treaties in force.

C.4 Liquidity risk

Liquidity Risk means the risk that SLLIE is unable to realise investments and other assets in order to settle their financial obligations when they fall due.

Measures to assess the material risks

Liquidity Risk is assessed as not material due to the business model of the Company. In terms of unit-linked policies, a certain minimum level of cash is always available in the policy accounts to earn the admin fees and mortality risk premiums, allowing to face liquidity risk.

Material risk exposure (incl. material changes)

As of year-end 2021, the Company is not subject to material liquidity risk exposures.

C.5 Operational risk

Operational Risk is the risk of losses resulting from inadequate or failed internal processes, people and systems, or from external events. This definition includes Outsourcing and Legal Risks but excludes risks arising from strategic decisions and reputational risks.

Measures to assess the material risks

Operational risk is regularly measured based on the Solvency II Standard Formula and its assessment is part of the ORSA process of the Company.

Material risk exposure (incl. material changes)

As of year-end 2021, the Company is exposed to material operational risk related to the business, which can therefore not be avoided. These include negative developments in the political / tax environment and loss of key skills or employees.

C.6 Other material risks

Besides the risks discussed above, the Company is exposed to the risks which arise as a consequence of the cross-border nature of the business. These are related to external regulatory or market factors (e.g. change in political or tax environment) that would unfavourably change the SLLIE's ability to maintain or develop its activities in the areas where the business is currently conducted.

C.7 Any other information

Risk concentration

The company has no material exposure to concentration risk as of year-end 2021.

Risk mitigation

Reinsurance

Reinsurance is used to limit the exposure to insurance risk. This does not, however, discharge the liability as a primary insurer, and, if a reinsurer fails to pay a claim, the Company remains liable for the payments to the policyholder. A loss allowance would be recognised for any estimated unrecoverable reinsurance.

SLLIE's management reviews reinsurance programs covering treaty, type, risks covered and retention on a regular basis. A process, competencies and limits are set up for the approval of reinsurance programs and their modification. To ensure that the Group's principles are observed, guidelines on reinsurance are in place.

In accordance with its retention policy for mortality, the Company limits its exposure to CHF 5 million per life.

Other risk transfer

Risk transfer primarily takes the form of reinsurance. Alternative forms of risk transfer (such as securitisation) require the formal approval of the GRC. No significant alternative form of risk transfer is used by the Company at present.

Insurance risks are regularly reported to the GRC.

Risk sensitivities

The assessment of risk sensitivities is a key element of the Company's ORSA, where a number of stress-, scenario and reverse stress tests are performed. These are performed based on assumptions related to the development of assets and a liabilities, taking the risk profile of SLLIE into account. The outcome of this analysis is used as a basis to identify the key risks the Company is exposed to and is integrated in the MTP process through the ORSA.

D Valuation for Solvency Purposes

D.1 Assets

According to Article 75(1)(a) of Directive 2009/138/EC all assets shall be valued at the amount for which they could be exchanged between knowledgeable willing parties in an arm's length transaction, that means with their fair values.

The overview of the Company's assets reported in the Solvency II balance sheet as of year-end 2021 is shown below (with year-end 2020 as comparison period). For more detailed information on the asset breakdown, we refer to template S.02.01.02 in the annex.

In CHF million

ASSETS	2021	2020
Investments (other than assets held for index-linked and unit-linked contracts)	39.6	41.6
Assets held for index-linked and unit-linked contracts	3 845.2	4 123.5
Reinsurance recoverables	901.8	984.6
Cash and cash equivalents	17.9	14.0
Other assets	3.2	6.1
Total Assets	4 834.7	5 198.8

A hierarchy of valuation methodologies is prescribed by Solvency II in Art. 10 of Commission Delegated Regulation EU 2015/35 for the valuation of assets. As a default valuation method, quoted market prices in active markets shall be used. If this is not possible, alternative approaches shall be used. The bases, methods and main assumptions used for the valuation of assets for solvency purposes are given below for the material asset classes, together with an explanation of material differences compared to the statutory valuation.

Investments (other than assets held for index-linked and unit-linked contracts)

SLLE investments mainly consist of bonds and deposits. Both assets classes are valued according to their market value as reported for IFRS purposes. Differences compared to statutory financial statements arise due to bonds being valued at amortized cost for statutory reporting purposes.

Assets held for index-linked and unit-linked contracts

Assets held for index-linked and unit-linked contracts are valued as the market value of the underlying investments as reported for IFRS and statutory reporting purposes.

Reinsurance recoverables

The value of the reinsurance recoverables corresponds to the local statutory figures. The impact of the reinsurance is shown net in the liabilities value under Solvency II.

Cash and cash-equivalents, other assets

Cash and cash equivalents and other assets are valued according to their nominal value. Differences compared to statutory financial statements arise from intangible assets being valued to zero pursuant to Art. 12 of Commission Delegated Regulation EU 2015/35.

Reconciliation of assets

The reconciliation of assets recognized for statutory and Solvency II purposes is shown in the table below.

In CHF million		
	2021	2020
Statutory assets	4 837.6	5 223.7
Intangible assets valuation	-3.1	-1.4
Bond valuation	0.3	0.7
Valuation of reinsurance recoverables	0.0	-24.3
Solvency II assets	4 834.7	5 198.8

D.2 Technical Provisions

The overview of the Company's technical provisions reported in the Solvency II balance sheet is shown below. For more detailed information on the breakdown, we refer to template S.12.01.02 in the annex.

In CHF million	Insurance with profit participation		Index-linked and unit-linked insurance		Other life insurance	
	2021	2020	2021	2020	2021	2020
Best estimate	24.1	22.3	4 623.0	4 870.2	1.4	2.5
Risk margin	0.1	0.1	11.8	13.9	0.0	0.0
Technical provisions	24.1	22.4	4 634.8	4 884.0	1.4	2.5

Solvency II valuation

The valuation of technical provision is set out in the Delegated Acts, Art. 17 to 61. Technical provisions either constitute of the best estimate and the risk margin or are calculated as a whole. Both methods are described in detail below. The same approach is used for the valuation of reinsurance recoverables.

According to Delegated Acts, Art. 55, technical provisions have to be calculated separately for the relevant LoB. The calculation of technical provisions shall make use of and be consistent with

information provided by the financial markets and generally available data on underwriting risks (market consistency).

The best estimate corresponds to the probability-weighted average of future cash-flows, taking account of the time value of money (expected present value of future cash-flows), using the relevant risk-free interest rate term structure. The calculation of the best estimate is based upon up-to-date and reliable information and realistic assumptions and performed using adequate, applicable and relevant actuarial and statistical methods. The best-estimate is calculated net of reinsurance recoverables.

The calculation of the best estimate is performed using a cash-flow valuation model in order to project future cash-flows related to premium, claims, expenses related to the Company's insurance obligations. Those cash-flows are derived based on assumptions about future mortality, policyholder behaviour, expenses and future evolution of the financial markets. The cash-flows are discounted using the relevant risk-free interest rates provided by EIOPA.

The risk margin is such as to ensure that the value of the technical provisions is equivalent to the amount that insurance undertakings would be expected to require in order to take over and meet the insurance obligations. It reflects the cost of holding regulatory capital. Pursuant to the Solvency II Directive, the calculation of the risk margin is based on a projection of future the future Solvency Capital Requirements under the assumption that the insurance portfolio of SLLIE is transferred to another insurance company.

Transitional and long-term guarantee measures

SLLIE does not use the Volatility Adjustment referred to in Art. 77b of Directive 2009/138/EC nor the transitional measures referred to in Art. 308c and Art. 308d of the same Directive.

Reconciliation of Technical Provisions

The difference between the Solvency II and statutory value of life technical provisions (excluding unit-linked business) is given as follows.

In CHF million	Solvency II		Statutory	
	2021	2020	2021	2020
Best estimate	25.5	24.8	25.5	24.8
Risk margin	0.1	0.1	0.0	0.0
Total	25.5	24.9	25.5	24.8

The only difference between the statutory and Solvency II value of technical provisions for non-unit linked business is therefore given by the Risk Margin (which does not exist in the statutory framework). The Best Estimate of technical provisions is assumed to be equal to the statutory value thereof (i.e. no revaluation takes place) as this business is considered to be immaterial compared to the remaining part of the Company's portfolio as of year-end 2021. This simplification

has been chosen by the Company pursuant to Art. 56 of Commission Delegated Regulation EU 2015/35.

The difference between the Solvency II and statutory value of life technical provisions for unit-linked business is shown below.

In CHF million	Solvency II		Statutory	
	2021	2020	2021	2020
Best estimate	4 623.0	4 870.2	4 670.6	4 953.9
Risk margin	11.8	13.9	0.0	0.0
Total	4 634.8	4 884.0	4 670.6	4 953.9

Besides differences arising from the Risk Margin (see above), material differences between the Solvency II best estimate and the statutory value of liabilities are due to present value of future profits (PVFP) being recognized in the Solvency II balance sheet. These are calculated with the same approach used for the PVFP valuation for the Market Consistent Embedded Value as well as the SST.

Level of uncertainty in the amount of the technical provisions

Random annual fluctuations of the insurance benefits, the lapse behaviour of policyholders and the profit participation rules could lead to portfolio variation. Pandemic events can have also significant one-off effects on the insurance benefits. Furthermore, changes in policyholder biometrics or lapse risks lead to high level of uncertainty of technical provisions. Thus, the actuarial assumptions have to be reviewed annually.

Recoverables from reinsurance contracts

The reinsurance recoverables are related to reinsurance contracts which are in place and cover the guarantees on a portion of the unit-linked portfolio of the Company.

The requirements regarding the treatment of recoverables are outlined in Delegated Acts, Art. 41 and 42. In particular, the calculation must be consistent with the principles and methodologies used for the valuation of the underlying technical provisions. The value of reinsurance recoverables is equal to the portion of gross technical provisions which is ceded by SLLIE to the reinsurer. As a result, the valuation is based on the same methods, models and assumptions used for the valuation of the Company's technical provisions.

D.3 Other Liabilities

The overview of the Company's other liabilities reported in the Solvency II balance sheet is as follows.

In CHF million		
	2021	2020
Provisions other than technical provisions	3.3	3.0
Pension benefit obligations	0.4	0.8
Deferred tax liabilities	4.1	6.1
Insurance and intermediary payables	58.5	164.1
Payables (trade, not insurance)	14.5	14.8
Subordinated liabilities	0.0	0.0
Any other liability, not elsewhere shown	3.6	1.0
Total other liabilities	84.3	189.8

The valuation of other liabilities for solvency purposes is discussed below together with the main differences compared to the statutory valuation.

Provisions other than technical provisions

Provisions other than technical provisions are related to ongoing and/or expected litigation cases. They correspond to the undiscounted settlement value according to IFRS.

Pension benefit obligation

The pension benefit obligation is recognized at its IAS19 value under IFRS as prescribed by Solvency II. This liability is not recognized in the statutory balance sheet.

Deferred tax liabilities

Pursuant to Art. 15 of the Delegated Acts, deferred tax liabilities (DTLs) are recognized in relation to all assets and liabilities recognized for solvency or tax purposes. The value of DTLs is determined based on the valuation differences between the market consistent values according to Solvency II and values used for tax purposes assuming a tax rate of 12.5%.

Insurance and intermediary payables

Insurance & intermediaries payables mainly consist of pending benefits of insurance contracts and are valued with their surrender value as for statutory purposes.

Payables

Payables are measured with the settlement value which corresponds to the values according to IFRS and statutory accounting. They mainly consist of short-term liabilities against associate companies and other creditors.

Subordinated liabilities

Subordinated liabilities are measured with the settlement value which corresponds to the Statutory and IFRS value.

Any other liabilities

Any other liabilities are measured with the settlement value which corresponds to the values according to IFRS and statutory accounting. They mainly consist of accruals for liabilities.

Reconciliation of other liabilities

As discussed above, the only differences between other liabilities recognized for solvency and statutory purposes arise from the recognition of pension benefit obligations and DTLs in the Solvency II balance sheet.

In CHF million		
Other liabilities	2021	2020
Statutory value	79.9	182.9
Pension benefit obligation	0.4	0.8
Deferred tax liabilities	4.1	6.1
Solvency II value	84.3	189.8

D.4 Alternative methods for valuation

SLLE applies no alternative methods for valuation as of year-end 2021.

E Capital Management

E.1 Own Funds

Capital management is included in the yearly planning ORSA process. For the planning process, at least three scenarios are defined at group level that are analysed in terms of capital management. Over a time horizon of three years, the different scenarios are analysed in depth to foresee future capital management actions.

The quantitative information contained in this section refers to template S.23.01.01 shown in the annex. The Own Funds are classified in Tiers pursuant to Solvency II regulations to reflect their quality, with Tier 1 being of highest quality and made up of items which fully absorb losses to enable the Company to continue as a going concern. Own Fund items which do not satisfy the conditions to be classified as Tier 1 but are still available to absorb losses can be classified as Tier 2 and Tier 3 items provided that they satisfy the relevant conditions set by Solvency II. As of year-end 2021, all Basic Own Fund Items of SLLIE are classified as Tier 1.

The composition and quality of the Basic Own Funds of SLLIE are shown in the next table.

In CHF million	Tier 1 – unrestricted		Tier 1 – restricted		Tier 2		Tier 3		Total	
	2021	2020	2021	2020	2021	2020	2021	2020	2021	2020
Basic Own Funds										
Ordinary share capital	5.0	5.0	-	-	-	-	-	-	5.0	5.0
Initial funds	3.0	3.0	-	-	-	-	-	-	3.0	3.0
Share premium account	49.2	49.2	-	-	-	-	-	-	49.2	49.2
Reconciliation reserve	32.9	38.0	-	-	-	-	-	-	32.9	38.0
Subordinated liabilities	-	-	-	-	-	-	-	-	-	-
Total Basic Own Funds	90.1	95.1	-	-	0.0	0.0	0.0	0.0	90.1	95.1

The increase of the reconciliation reserve compared to year-end 2020 is mainly explained by the fact that no foreseeable dividends are accounted for as of year-end 2021.

As of year-end 2021 in line with previous year, the total Basic Own Funds are eligible to cover the Solvency Capital Requirement (SCR) of SLLIE, as shown in the following table.

In CHF million	Tier 1 – unrestricted		Tier 1 – restricted		Tier 2		Tier 3		Total	
	2021	2020	2021	2020	2021	2020	2021	2020	2021	2020
Total Eligible Own Funds to meet the SCR	90.1	95.1	-	-	-	-	-	-	90.1	95.1

The amount and composition of the eligible Own Funds to cover the Minimum Capital Requirement (MCR) are shown below.

In CHF million	Tier 1 – unrestricted		Tier 1 – restricted		Tier 2		Tier 3		Total	
	2021	2020	2021	2020	2021	2020	2021	2020	2021	2020
Total Eligible Own Funds to meet the MCR	90.1	95.1	-	-	-	-	-	-	90.1	95.1

Material differences between equity shown in the financial statements and the excess of assets over liabilities as calculated for Solvency II purposes arise from different rules and regulations for valuation and consideration of balance sheet items (see chapter D). The reconciliation between statutory equity and the excess of assets over liabilities in the Solvency II balance sheet is as follows.

In CHF million		
	2021	2020
Statutory Equity	61.6	62.1
Valuation of Technical Provisions and reinsurance recoverables	35.7	45.5
Intangible assets	-3.1	-1.4
Deferred tax liabilities	-4.1	-6.1
Other adjustments	-0.1	-4.9
Excess of assets over liabilities for solvency purposes	90.1	95.1

E.2 Solvency Capital Requirement and Minimum Capital Requirement

The SCR is calculated based on the Solvency II Standard Formula. The next table shows the amount of SCR.

In CHF million		
	2021	2020
Basic SCR	36.7	39.6
Adjustment for the loss absorbing capacity of technical provisions	-	-
Adjustment for the loss absorbing capacity of deferred taxes	-4.9	-5.2
Operational risk	2.6	1.9
SCR	34.4	36.3

The amount of SCR by risk module is shown below.

In CHF million		
	2021	2020
SCR for market risk	17.3	15.4
SCR for counterparty default risk	12.9	14.6
SCR for life underwriting risk	21.2	25.1
Basic SCR	36.7	39.6

The highest risk component is given by insurance risk; this reflects the loss in future income which would be faced by SLLIE in case of a significant lapse event in the underlying portfolio.

The MCR is calculated based on the standard model. In the end, the cap from the SCR is defining the required level of MCR (45% of the SCR).

In CHF million		
	2021	2020
Linear MCR	26.4	27.6
Floor	8.6	9.1
Cap	15.5	16.3
Combined MCR	15.5	16.3
Minimum guarantee fund	6.4	6.7
MCR	15.5	16.3

SLLIE applies neither simplified calculations for the Standard Formula SCR nor uses undertaking specific parameters as of year-end 2021.

E.3 Use of the duration-based equity risk sub-module in the calculation of the Solvency Capital Requirement

SLLIE does not use the duration based equity risk sub-module.

E.4 Differences between the standard formula and any internal model used

The figures shown in the previous chapters show that SLLIE is compliant with the regulatory requirements in terms of compliance with the MCR and SCR.

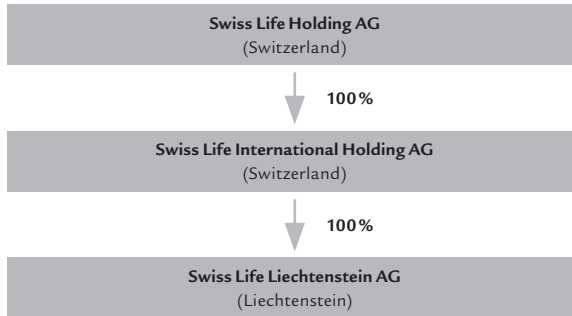
E.5 Impact of Corona Virus on Solvency Ratio

Since Swiss Life (Liechtenstein) AG does not hold any equities within the own assets, the impact of stock market decline on the Solvency II ratio is very limited. Unit-linked being the main business component, there is a proportional effect in terms of capital available and required.

Lower present value of future profits after stock market decline imply lower capital available as well as a reduced risk exposure; in particular, a decrease in market and insurance risk. The impact on the Solvency II ratio is not material.

Annex

Holding structure



S.02.01.02 Balance sheet

CHF	Solvency II value	
	C0010	
ASSETS AS OF 31 DECEMBER 2021		
Intangible assets	R0030	0
Deferred tax assets	R0040	0
Pension benefit surplus	R0050	0
Property, plant & equipment held for own use	R0060	0
Investments (other than assets held for index-linked and unit-linked contracts)	R0070	39 596 537
Property (other than for own use)	R0080	0
Holdings in related undertakings, including participations	R0090	100 000
Equities	R0100	0
Equities – listed	R0110	0
Equities – unlisted	R0120	0
Bonds	R0130	37 421 137
Government Bonds	R0140	6 313 162
Corporate Bonds	R0150	31 107 975
Structured notes	R0160	0
Collateralised securities	R0170	0
Collective Investments Undertakings	R0180	0
Derivatives	R0190	0
Deposits other than cash equivalents	R0200	2 075 400
Other investments	R0210	0
Assets held for index-linked and unit-linked contracts	R0220	3 845 197 172
Loans and mortgages	R0230	0
Loans on policies	R0240	0
Loans and mortgages to individuals	R0250	0
Other loans and mortgages	R0260	0
Reinsurance recoverables from:	R0270	901 822 942
Non-life and health similar to non-life	R0280	0
Non-life excluding health	R0290	0
Health similar to non-life	R0300	0
1000	R0310	21 467 795
Health similar to life	R0320	0
Life excluding health and index-linked and unit-linked	R0330	21 467 795
Life index-linked and unit-linked	R0340	880 355 147
Deposits to cedants	R0350	0
Insurance and intermediaries receivables	R0360	4 299 073
Reinsurance receivables	R0370	0
Receivables (trade, not insurance)	R0380	22 667 871
Own shares (held directly)	R0390	0
Amounts due in respect of own fund items or initial fund called up but not yet paid in	R0400	0
Cash and cash equivalents	R0410	17 900 487
Any other assets, not elsewhere shown	R0420	3 228 431
TOTAL ASSETS	R0500	4 834 712 514

S.02.01.02 Balance sheet (continued)

CHF	Solvency II value	
	C0010	
LIABILITIES AS OF 31 DECEMBER 2021		
Technical provisions – non-life	R0510	0
Technical provisions – non-life (excluding health)	R0520	0
TP calculated as a whole	R0530	0
Best Estimate	R0540	0
Risk margin	R0550	0
Technical provisions – health (similar to non-life)	R0560	0
TP calculated as a whole	R0570	0
Best Estimate	R0580	0
Risk margin	R0590	0
Technical provisions – life (excluding index-linked and unit-linked)	R0600	25 526 944
Technical provisions – health (similar to life)	R0610	0
TP calculated as a whole	R0620	0
Best Estimate	R0630	0
Risk margin	R0640	0
Technical provisions – life (excluding health and index-linked and unit-linked)	R0650	25 526 944
TP calculated as a whole	R0660	0
Best Estimate	R0670	25 461 912
Risk margin	R0680	65 032
Technical provisions – index-linked and unit-linked	R0690	4 634 817 976
TP calculated as a whole	R0700	0
Best Estimate	R0710	4 623 010 335
Risk margin	R0720	11 807 641
Contingent liabilities	R0740	0
Provisions other than technical provisions	R0750	3 305 118
Pension benefit obligations	R0760	368 354
Deposits from reinsurers	R0770	0
Deferred tax liabilities	R0780	4 062 876
Derivatives	R0790	0
Debts owed to credit institutions	R0800	0
Financial liabilities other than debts owed to credit institutions	R0810	0
Insurance & intermediaries payables	R0820	58 460 240
Reinsurance payables	R0830	0
Payables (trade, not insurance)	R0840	14 532 382
Subordinated liabilities	R0850	0
Subordinated liabilities not in BOF	R0860	0
Subordinated liabilities in BOF	R0870	0
Any other liabilities, not elsewhere shown	R0880	3 573 007
TOTAL LIABILITIES	R0900	4 744 646 898
Excess of assets over liabilities	R1000	90 065 616

S.05.01.02 Premiums, claims and expenses by line of business

as of 31 December 2021		Line of Business for: life insurance obligations						Life reinsurance obligations		Total
		Health insurance	Insurance with profit participation	Index-linked and unit-linked insurance	Other life insurance	Annuities stemming from non-life insurance contracts and relating to health insurance obligations	Annuities stemming from non-life insurance contracts and relating to health insurance obligations	Health reinsurance	Life reinsurance	
CHF		C0210	C0220	C0230	C0240	C0250	C0260	C0270	C0280	C0300
PREMIUMS WRITTEN										
Gross	R1410		4 205 588	75 061 763						79 267 350
Reinsurers' share	R1420		3 612 180	746 757						4 358 937
Net	R1500		593 408	74 315 006						74 908 414
PREMIUMS EARNED										
Gross	R1510		4 205 588	75 061 763						79 267 350
Reinsurers' share	R1520		3 612 180	746 757						4 358 937
Net	R1600		593 408	74 315 006						74 908 414
CLAIMS INCURRED										
Gross	R1610		1 246 721	446 086 393						447 333 115
Reinsurers' share	R1620		1 028 856	78 941 324						79 970 180
Net	R1700		217 866	367 145 069						367 362 934
CHANGES IN OTHER TECHNICAL PROVISIONS										
Gross	R1710		2 563 895	303 756 160	-988 335					305 331 720
Reinsurers' share	R1720		-3 043 047	109 365 258						106 322 210
Net	R1800		5 606 942	194 390 903	-988 335					199 009 510
Expenses incurred	R1900		388 990	15 902 000						16 290 990
Other expenses	R2500									765 378
TOTAL EXPENSES	R2600									17 056 367

S.05.02.01 Premiums, claims and expenses by country

as of 31 December 2021		Home Country						Top 5 countries (by amount of gross premiums written) – non-life obligations		Total Top 5 and home country
CHF		C0150	C0160	C0170	C0180	C0190	C0200	C0210		
	R1400		(IT) Italy (CH) Switzerland	(AT) AUSTRIA	(DE) Germany	(SE) Sweden				
		C0220	C0230	C0240	C0250	C0260	C0270	C0280		
PREMIUMS WRITTEN										
Gross	R1410	139 164	32 862 506	22 591 398	19 061 441	3 841 005	762 329	79 257 843		
Reinsurers' share	R1420	0		4 358 937				4 358 937		
Net	R1500	139 164	32 862 506	18 232 461	19 061 441	3 841 005	762 329	74 898 906		
PREMIUMS EARNED										
Gross	R1510	139 164	32 862 506	22 591 398	19 061 441	3 841 005	762 329	79 257 843		
Reinsurers' share	R1520	0	0	4 358 937	0	0	0	4 358 937		
Net	R1600	139 164	32 862 506	18 232 461	19 061 441	3 841 005	762 329	74 898 906		
CLAIMS INCURRED										
Gross	R1610	27 220	76 919 510	107 873 720	20 236 601	145 496 814	58 949 146	409 503 011		
Reinsurers' share	R1620			1 141 434				1 141 434		
Net	R1700	27 220	76 919 510	106 732 286	20 236 601	145 496 814	58 949 146	408 361 577		
CHANGES IN OTHER TECHNICAL PROVISIONS										
Gross	R1710	-12 203		109 365 258	-22 280 677	105 556		87 177 933		
Reinsurers' share	R1720			109 365 258	-3 157 293	114 246		106 322 210		
Net	R1800	-12 203		0	-19 123 383	-8 691		-19 144 277		
Expenses incurred	R1900	11 045 241		2 130 063	3 107 013	8 672		16 290 990		
Other expenses	R2500							765 378		
TOTAL EXPENSES	R2600							17 056 367		

S.12.01.02 Life and Health SLT Technical Provisions

as of 31 December 2021		Index-linked and unit-linked insurance				Other life insurance				Accepted reinsurance	Total (Life other than health insurance, incl. Unit-Linked)
		Insurance with profit participation	Index-linked and unit-linked insurance	Contracts without options and guarantees	Contracts with options or guarantees	Other life insurance	Contracts without options and guarantees	Contracts with options or guarantees	Annuities stemming from non-life insurance contracts and relating to insurance obligation other than health insurance obligations		
CHF		C0020	C0030	C0040	C0050	C0060	C0070	C0080	C0090	C0100	C0150
Technical provisions calculated as a whole											
	R0010										
Total Recoverables from reinsurance/SPV and Finite Re after the adjustment for expected losses due to counterparty default associated to TP calculated as a whole R0020											
	R0020										
TECHNICAL PROVISIONS CALCULATED AS A SUM OF BE AND RM											
BEST ESTIMATE											
Gross Best Estimate	R0030	24 061 182		3 746 886 892	876 123 443		400 191	1 000 538			4 648 472 246
Total Recoverables from reinsurance/SPV and Finite Re after the adjustment for expected losses due to counterparty default											
	R0080	21 467 795		0	880 355 147		0	0			901 822 942
Best estimate minus recoverables from reinsurance/SPV and Finite Re – total											
	R0090	2 593 387		3 746 886 892	-4 231 704		400 191	1 000 538			3 746 649 304
Risk Margin	R0100	61 455	11 807 641			3 578					11 872 674
AMOUNT OF THE TRANSITIONAL ON TECHNICAL PROVISIONS											
Technical Provisions calculated as a whole											
	R0110										
Best estimate											
	R0120										
Risk margin											
	R0130										
TECHNICAL PROVISIONS – TOTAL	R0200	24 122 637	4 634 817 976			1 404 307					4 660 344 920

S.23.01.01 Own funds

as of 31 December 2021

CHF		Tier 1 – Tier 3				
		Total	unrestricted	restricted	Tier 2	Tier 3
		C0010	C0020	C0030	C0040	C0050
BASIC OWN FUNDS BEFORE DEDUCTION FOR PARTICIPATIONS IN OTHER FINANCIAL SECTOR AS FORESEEN IN ARTICLE 68 OF DELEGATED REGULATION (EU) 2015/35						
	Ordinary share capital (gross of own shares)	R0010	5 000 000	5 000 000		
	Share premium account related to ordinary share capital	R0030	49 190 562	49 190 562		
	Initial funds, members' contributions or the equivalent basic own – fund item for mutual and mutual-type undertakings	R0040	3 000 000	3 000 000	0	
	Subordinated mutual member accounts	R0050	0		0	0
	Surplus funds	R0070				
	Preference shares	R0090				
	Share premium account related to preference shares	R0110	0		0	0
	Reconciliation reserve	R0130	32 875 055	32 875 055		
	Subordinated liabilities	R0140				
	An amount equal to the value of net deferred tax assets	R0160				
	Other own fund items approved by the supervisory authority as basic own funds not specified above	R0180	0	0	0	0
OWN FUNDS FROM THE FINANCIAL STATEMENTS THAT SHOULD NOT BE REPRESENTED BY THE RECONCILIATION RESERVE AND DO NOT MEET THE CRITERIA TO BE CLASSIFIED AS SOLVENCY II OWN FUNDS						
	Own funds from the financial statements that should not be represented by the reconciliation reserve and do not meet the criteria to be classified as Solvency II own funds	R0220	0			
DEDUCTIONS						
	Deductions for participations in financial and credit institutions	R0230	0	0	0	0
	Total basic own funds after deductions	R0290	90 065 616	90 065 616	0	0
ANCILLARY OWN FUNDS						
	Unpaid and uncalled ordinary share capital callable on demand	R0300				
	Unpaid and uncalled initial funds, members' contributions or the equivalent basic own fund item for mutual and mutual – type undertakings, callable on demand	R0310	0		0	
	Unpaid and uncalled preference shares callable on demand	R0320	0		0	0
	A legally binding commitment to subscribe and pay for subordinated liabilities on demand	R0330	0		0	0
	Letters of credit and guarantees under Article 96(2) of the Directive 2009/138/EC	R0340	0		0	
	Letters of credit and guarantees other than under Article 96(2) of the Directive 2009/138/EC	R0350	0		0	
	Supplementary members calls under first subparagraph of Article 96(3) of the Directive 2009/138/EC	R0360	0		0	
	Supplementary members calls – other than under first subparagraph of Article 96(3) of the Directive 2009/138/EC	R0370	0		0	0
	Other ancillary own funds	R0390	0		0	0
	Total ancillary own funds	R0400	0		0	0
1 000.00						
	Total available own funds to meet the SCR	R0500	90 065 616	90 065 616	0	0
	Total available own funds to meet the MCR	R0510	90 065 616	90 065 616	0	0
	Total eligible own funds to meet the SCR	R0540	90 065 616	90 065 616	0	0
	Total eligible own funds to meet the MCR	R0550	90 065 616	90 065 616	0	0
	SCR	R0580	34 361 658			
	MCR	R0600	15 462 746			
	Ratio of Eligible own funds to SCR	R0620	262.11%			
	Ratio of Eligible own funds to MCR	R0640	582.47%			
C0060						
RECONCILIATION RESERVE						
	Excess of assets over liabilities	R0700	90 065 616			
	Own shares (held directly and indirectly)	R0710				
	Foreseeable dividends, distributions and charges	R0720	0			
	Other basic own fund items	R0730	57 190 562			
	Adjustment for restricted own fund items in respect of matching adjustment portfolios and ring fenced funds	R0740	0			
	Reconciliation reserve	R0760	32 875 055			
EXPECTED PROFITS						
	Expected profits included in future premiums (EPIFP) – Life business	R0770	0			
	Expected profits included in future premiums (EPIFP) – Non- life business	R0780	0			
	Total Expected profits included in future premiums (EPIFP)	R0790	0			

S.25.01.21 Solvency Capital Requirement – for undertakings on Standard Formula

as of 31 December 2021

CHF		Gross solvency	USP	Simplifications
		capital requirement		
		C0110	C0090	C0120
Market risk	R0010	17 281 103		
Counterparty default risk	R0020	12 865 531		
Life underwriting risk	R0030	21 188 365		
Health underwriting risk	R0040	0		
Non-life underwriting risk	R0050	0		
Diversification	R0060	-14 679 175		
Intangible asset risk	R0070	0		
Basic Solvency Capital Requirement	R0100	36 655 824		

CALCULATION OF SOLVENCY CAPITAL REQUIREMENT

		C0100
Operational risk	R0130	2 614 642
Loss-absorbing capacity of technical provisions	R0140	0
Loss-absorbing capacity of deferred taxes	R0150	-4 908 808
Capital requirement for business operated in accordance with Art. 4 of Directive 2003/41/EC	R0160	0
Solvency capital requirement excluding capital add-on	R0200	34 361 658
Capital add-on already set	R0210	0
Solvency capital requirement	R0220	34 361 658

OTHER INFORMATION ON SCR

Capital requirement for duration-based equity risk sub-module	R0400
Total amount of Notional Solvency Capital Requirement for remaining part	R0410
Total amount of Notional Solvency Capital Requirements for ring fenced funds	R0420
Total amount of Notional Solvency Capital Requirements for matching adjustment portfolios	R0430
Diversification effects due to RFF nSCR aggregation for article 304	R0440

S.28.01.01 Minimum Capital Requirement – Only life or only non-life insurance or reinsurance activity Linear formula component for life insurance and reinsurance obligations

as of 31 December 2021

C0040

MCR _i Result	R0200	26 403 115		
1000			Net (of reinsurance/SPV) best estimate and TP calculated as a whole	Net (of reinsurance/SPV) total capital at risk
			C0050	C0060
Obligations with profit participation – guaranteed benefits	R0210	2 539 946		
Obligations with profit participation – future discretionary benefits	R0220	53 442		
Index-linked and unit-linked insurance obligations	R0230	3 742 655 188		
Other life (re)insurance and health (re)insurance obligations	R0240	2 018 574		
Total capital at risk for all life (re)insurance obligations	R0250			101 342 366

S.28.01.01 Minimum Capital Requirement – Only life or only non-life insurance or reinsurance activity (continued) Overall MCR calculation
as of 31 December 2021

CHF		C0070
Linear MCR	R0300	26 403 115
SCR	R0310	34 361 658
MCR cap	R0320	15 462 746
MCR floor	R0330	8 590 415
Combined MCR	R0340	15 462 746
Absolute floor of the MCR	R0350	6 433 740
		C0070
Minimum Capital Requirement	R0400	15 462 746

Contact

Swiss Life (Liechtenstein) AG
Industriestrasse 56
9491 Ruggell
Liechtenstein

Impressum

Publisher – Swiss Life (Liechtenstein) AG
Editorial responsibility – Swiss Life (Liechtenstein) AG
Production – Management Digital Data AG, Lenzburg
© Swiss Life (Liechtenstein) AG, 2021

CAUTION REGARDING FORWARD-LOOKING STATEMENTS

This document may contain projections or other forward-looking statements related to Swiss Life that are subject to known and unknown risks, uncertainties and other important factors. The reader should be aware that these statements are only projections which could differ materially from the actual results, financial situation, development, performance or expectations and that therefore no undue reliance should be placed on such forward-looking statements. Neither Swiss Life nor any of its directors, officers, employees or advisors, nor any other person connected or otherwise associated with Swiss Life, makes any representation or warranty, express or implied, as to the accuracy or completeness of the information contained in this document. Neither Swiss Life nor any of its directors, officers, employees or advisors, nor any other person connected or otherwise associated with Swiss Life, shall have any liability whatsoever for loss howsoever arising, directly or indirectly, from any use of this document. All forward-looking statements are based on the data available to Swiss Life at the time the present document was compiled. Unless otherwise required by applicable law, Swiss Life assumes no responsibility to publicly update or alter its forward-looking statements or to adapt them, whether as a result of new information, future events or developments or any other reason.

There may be minor discrepancies in total figures and percentages in this report due to rounding effects.



*We enable people to lead
a self-determined life.*

*Swiss Life (Liechtenstein) AG
Industriestrasse 56
9491 Ruggell
Liechtenstein*

*Tel. +423 377 70 40
www.swisslife.li*